


Magnet Information and Control System (MICS)

- Service Manual

Version 03



Copyright© by Bruker Corporation

All rights reserved. No part of this publication may be reproduced, stored in a retrieval system, or transmitted, in any form, or by any means without the prior consent of the publisher. Product names used are trademarks or registered trademarks of their respective holders.

This manual was written by

Rolf Spreiter, Peter Baur and Stephan Heiss

© May 25, 2012: Bruker Corporation

Faellanden, Switzerland

ZTKS0252 / Z33046 / Rev.: 03

For further technical assistance on the Magnet Information and Control System (MICS), please do not hesitate to contact your nearest BRUKER dealer or contact us directly at:

BRUKER BioSpin AG
Industriestrasse 26
CH-8117 Faellanden
Switzerland

Phone: + 41 44 825 91 11
FAX: + 41 44 825 96 96
E-mail: service@bruker.ch
Internet: www.bruker.com

1	Prerequisites	5
1.1	Installation Requirements.....	5
1.2	Supported Platforms.....	5
1.3	Compatibility.....	5
1.3.1	TopSpin.....	5
1.4	Limitations	5
2	Safety	7
2.1	Approved Persons.....	7
2.2	Intended Use.....	7
3	Installation	9
3.1	TopSpin Installation.....	9
3.1.1	Preparation.....	9
3.1.2	Installation and Configuration.....	9
3.2	Standalone Installation.....	10
3.3	The MICS Installer.....	11
3.3.1	Providing the Magnet BIS File.....	12
3.3.2	Choosing the He/N2 Data Source.....	12
3.3.2.1	BSMS Mode	12
3.3.2.2	TopSpin Mode.....	13
3.3.3	Equipment Options.....	13
3.3.4	Network Settings	14
4	Updating MICS	15
4.1	Updating MICS via CD-ROM.....	15
4.2	MICS Update Manager.....	15
5	Frequently Asked Questions	17
A	Appendix	19
A.1	Abbreviations.....	19

1 Prerequisites

1.1 Installation Requirements

In order to install MICS, you need the MICS CD which will be shipped together with the Magnet System or a TopSpin DVD (v3.1 or later) which includes MICS as part of its installation. It is also possible to download the content of the MICS CD as an archive from the MICS Web site (see section "[Standalone Installation](#)" on page 10).

To use the full MICS functionality, it needs to be installed together with a magnet description file (BIS file) that matches your system. The BIS file is part of the MICS CD of the magnet system. It is also possible to let the MICS installer download the BIS file during the installation process (see section "[Providing the Magnet BIS File](#)" on page 12).

1.2 Supported Platforms

The current MICS version has been tested with Windows XP, Windows 7 and CentOS 5.

1.3 Compatibility

MICS is backward compatible to previous MICS versions.

1.3.1 TopSpin

MICS can be used together with TopSpin 2.1 and newer. It is possible though to install MICS on a computer with a TopSpin Version prior to 2.1. In these cases MICS cannot get started from within TopSpin, but must be started standalone (batchfile/shell-script or desktop shortcut).

1.4 Limitations

i MICS was designed for informational purposes only and is neither a realtime monitoring nor a security tool. It does not run as a system service and therefore needs to be started by the user, either manually or by means of a startup script.

MICS will be terminated if the user logs out.

Please be aware that MICS can only be started once. If multiple users are logged in at the same time (user switching), MICS can only be used by the user who started MICS and any message dialogs will appear on the screen of this user only.

2 Safety

2.1 Approved Persons

Bruker BioSpin AG identifies the following qualifications for personnel performing tasks on the magnet system or its components:

Approved Customer Personnel

As a result of professional training by Bruker Service personnel, experience and knowledge of applicable regulations these persons are qualified to perform the specific tasks on the magnet system and its components assigned to them in this manual. Approved Customer Personnel are qualified to identify possible hazards and risks associated with the tasks assigned to them and to perform all possible steps to eliminate or minimize these risks.

Bruker Service Personnel

These persons are qualified by appropriate qualification and professional training and experience (including all necessary knowledge of applicable regulations and regulatory requirements) to perform specific tasks on the magnet system and its components. Bruker Service Personnel are qualified to identify possible hazards and risks and to perform all possible steps to eliminate or minimize these risks.

2.2 Intended Use

The Magnet Information and Control System (MICS) is an information utility, designed and intended for support of the user to check the state of a magnet system and its components.

Damage claims from damages caused by other than the intended use of the Magnet Information and Control System are excluded and the customer is held liable.

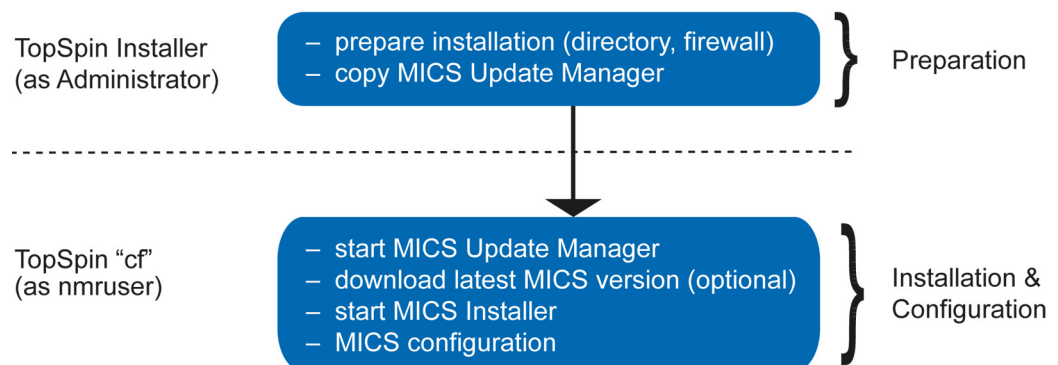
3 Installation

3.1 TopSpin Installation

As of TopSpin 3.1, MICS can be preinstalled via the TopSpin Installer and can be installed and configured using TopSpin's `cf` command. In addition to that, a standalone installation which works independent of TopSpin is also supported (see "[Standalone Installation](#)" on page 10).

i Do NOT install MICS within the same directory as TopSpin. Install MICS in a separate directory, e.g. `c:\bruker\mics` or `/opt/bruker/mics`.

The following steps will be performed by the TopSpin Installer (v3.1 and newer):



3.1.1 Preparation

The TopSpin installation has to be performed as administrator. During the installation you will be asked for the MICS directory. It is strongly recommended NOT to install MICS within the TopSpin directory. Use a separate directory for MICS (e.g. `c:\bruker\mics` or `/opt/bruker/mics`). Once the MICS directory has been defined, the TopSpin Installer will perform the necessary steps to prepare the MICS installation.

3.1.2 Installation and Configuration

During the configuration of the magnet system using TopSpin's `cf` command, the MICS Update Manager will be started. It offers the download of the newest version of MICS from the Bruker server. If your system does not have internet connection, the Update Manager will suggest to install the MICS version provided by the TopSpin Installer. Alternatively, you can use the Bruker Service login to download MICS from the MICS Web site below and provide the MICS Update Manager with the downloaded archive from a memory stick or CD.

http://www.bruker-biospin.com/software_mics.html

The MICS Update Manager then starts the MICS Installer which will lead through the configuration of MICS. Details of the configuration options are described in section "[The MICS Installer](#)" on page 11.

3.2 Standalone Installation

Prior to TopSpin 3.1, MICS needs to be installed standalone. A standalone installation **must be run as an administrator** and can be started from the MICS CD shipped with the magnet system or from a downloaded MICS archive at:

http://www.bruker-biospin.com/software_mics.html

Windows

1. Log in as administrator.
2. Run the MICS Installer by double-clicking the `install.bat` file located at *[CD Drive]/install/windows/*.
3. Choose the MICS installation directory. Do not install MICS within the TopSpin directory. Use a separate directory for MICS, e.g. *c:\bruker\mics*.
4. Follow the installation steps of the MICS Installer as described in section "[The MICS Installer](#)" on page 11.

Linux

1. Use the command `su -` in a terminal or login as root.
2. Change to the directory *[CD Drive]/install/linux* where *[CD Drive]* is the mount path to the CD drive e.g. */media/cdrecorder*.
3. Start the MICS Installer using the command `./install`.
4. Choose the MICS installation directory. Do not install MICS within the TopSpin directory. Use a separate directory for MICS, e.g. */opt/bruker/mics*.
5. Follow the installation steps of the MICS Installer as described in section "[The MICS Installer](#)" on page 11.

3.3 The MICS Installer

If you choose a MICS directory which already contains a MICS installation, the MICS Installer will automatically import the existing settings.

Check the options according to the magnet system configuration. A detailed description of the configuration options is given in the next sections.

MICS Installation Settings
Installation Folder: c:\Bruker\mics

General Settings
Installation Date: 2012-03-16

BIS File

- Keep already installed BIS file
BZH 8'400'70I
- Select BIS file:
- Download BIS file:
- No BIS file (viewer only)

Options

- N2 level sensor installed
Sensor active length [mm] 750
- BSNL liquefier installed
- BNL liquefier installed
- RS system (N2 free)
Alarm temperature [K] 90
Type: MAG_RS only

He/N2 Data Source

- BSMS (recommended, requires ELCB)
- TopSpin (specify [TS]\prog\logfiles folder)

Network Settings

- BSMS/ELCB IP: 149.236.99.20
- CRCO IP:
- SMTP Server: mail.bruker.ch
- Sender EMail: mics@bruker.ch

Buttons: Cancel, Start Installation

3.3.1 Providing the Magnet BIS File

The magnet BIS file is a file that is specific for the magnet system and that contains vital technical information to run MICS.

It can be obtained by one of the following ways:

- **Keep already installed BIS file.**

This option is only available if a MICS version is already installed.

- **Select BIS file.**

Specify the BIS file from an external location (memory stick, CD).

- **Download BIS file.**

Download the BIS file by specifying the magnet systems serial numbers. The numbers can be found on the type label of the magnet system:

Please note that magnet systems from Bruker Switzerland and from Bruker Germany have different numbering schemes of the serial/system numbers.

- **No BIS file (viewer only).**

without a BIS file, MICS can only be used in a limited fashion and act as a viewer for existing He levels.



A particular BIS file can also be downloaded from the MICS website below, by specifying the serial numbers of the magnet system.

http://www.bruker-biospin.com/software_mics.html

3.3.2 Choosing the He/N2 Data Source

The recommended data source for MICS to read helium (and maybe nitrogen) level information from is the BSMS. This option is supported on all systems equipped with a BSMS/ELCB board. However for old systems MICS can also be configured to read the level information from TopSpin's *heliumlog* logfile.

3.3.2.1 BSMS Mode

To let MICS read the level directly from the BSMS, the IP address of the BSMS device has to be specified.

The level information is read on an hourly basis. However MICS does not trigger any measurements itself. The actual age of a measurement depends on the measurement interval of the corresponding component (usually 24h for helium and 1h for nitrogen).

3.3.2.2 TopSpin Mode

To let MICS read the level from the TopSpin log file, the path to the folder containing the file *heliumlog* has to be specified.

In TopSpin Version prior to 3.1 the file *heliumlog* is located in the directory [TOPSPIN]/prog/logfiles. Since this folder depends on the TopSpin installation directory, you might need to update this setting in MICS after every TopSpin installation.

As of TopSpin Version 3.1p0 the [DISKLESS]/prog/logfiles directory will be used for storing logfiles.

The levels in the TopSpin logfile are normally updated every 24 h by TopSpin's helevtransfer daemon.

i The TopSpin mode is supported for compatibility reasons and should not be used unless the system is not equipped with a BSMS/ELCB board.

3.3.3 Equipment Options

Choose the appropriate equipment options depending on the system:

N2 level sensor installed	Select this option if the magnet system is equipped with a nitrogen level sensor.
Sensor active length	Insert the active length of the nitrogen level sensor in mm.
BSNL installed	Select this option if the magnet system is equipped with a BSNL device.
BNL installed	Select this option if the magnet system is equipped with a BNL device.
BNL EMail recipient(s)	Recipients for BNL for error messages. Separate multiple addresses with semicolon.
RS System (N2 free)	Select this option for nitrogen free magnet systems.
Alarm temperature [K]	Maximum allowed temperature limit of the radiation shield in [K].
CMU/MAG-RS MAG-RS RS-N2-Converter	CMU/MAG-RS should be selected for all new systems with a JAC (Java Controller). Do not change it unless you know exactly it is an old system.

For magnet systems equipped with a BSNL refer to the Technical Manual "BSMS/2 Systems with ELCB".

For magnet systems with a BNL installed refer to the supplied BNL User Manual.

3.3.4 Network Settings

BSMS/ELCB IP

If you operate MICS in the BSMS mode (recommended, see section "[BSMS Mode](#)" on [page 12](#)), you need to specify the IP address of the BSMS device.

CRCO IP

The IP address of the CRCO client must only be specified for magnet systems equipped with a BSNL device.

SMTP Server

To enable MICS to send emails, an outgoing mail server (SMTP) needs to be configured as well as a valid sender address. Please ask your IT department for the proper configuration and whether authentication and/or encryption is required for SMTP or not.

MICS uses the standard SMTP port 25 to send emails and provides basic support for authentication (SMTP-Auth) and encryption (SSL/TLS).

i If your IT environment requires to use authentication, it is recommended to use a designated email account for MICS. Do not use your personal account settings here, since password protection is only weak.

Sender EMail

The email address that appears as sender address in emails sent by MICS.

EMail Recipients

The default recipients for alert/error emails sent by MICS. Multiple addresses can be separated by a semi-colon. This can be changed later anytime by the user in the "Notification Settings" tab of MICS.

i Note that the email function is an important part of the notification concept in MICS. It should be configured carefully and it is recommended to send a test email after a configuration change. A test email can be sent in the "Notification Settings" tab of MICS via the "Options" button.

4 Updating MICS

4.1 Updating MICS via CD-ROM

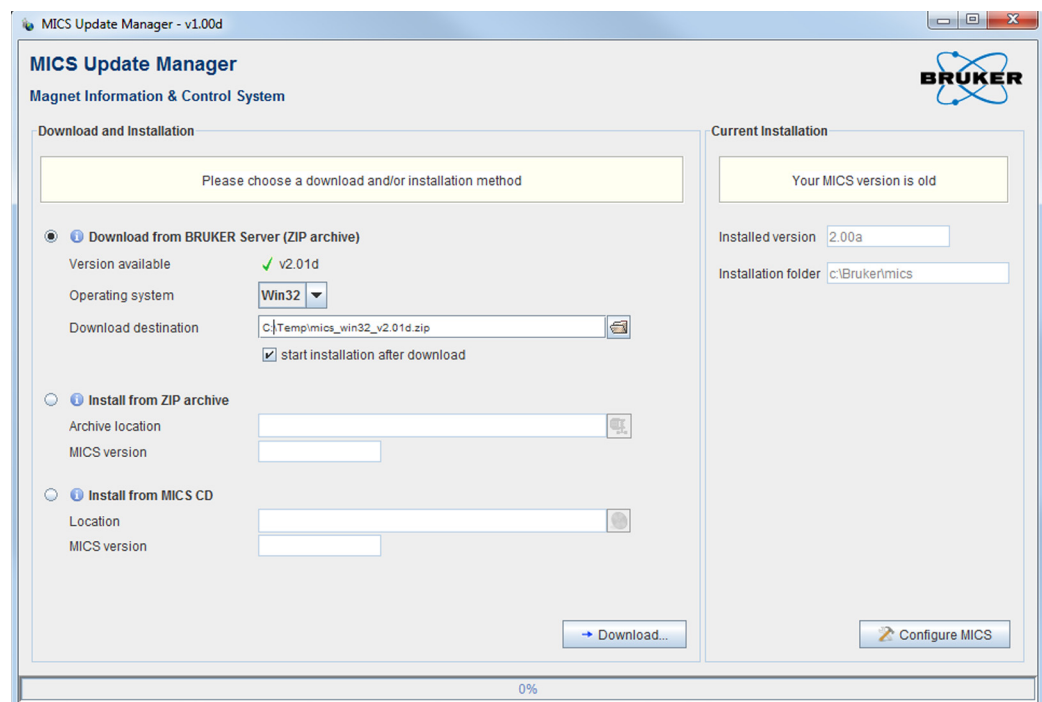
A newer version of MICS can be installed at any time by running the MICS Installer (see section "Standalone Installation" on page 10) from an official MICS CD or a downloaded MICS archive. The MICS setup will detect an already installed MICS and will import existing settings.

4.2 MICS Update Manager

As an alternative, MICS 2.0 and newer comes with a MICS Update Manager which lets you conveniently update your MICS installation.

The MICS Update Manager can be started with the script located in [MICS_HOME]/micsupdate(.bat).

If the MICS Update Manager is used to update an already installed MICS, it does not need to be run as an administrator.



The MICS Update Manager offers several ways to install/update a MICS installation:

a) Download from BRUKER Server (ZIP archive)

Lets you download a platform dependent ZIP archive containing the newest MICS version. The archive can either be installed directly on the current system or stored on an external media in order to perform offline updates of systems without internet connection.

b) Install from ZIP archive

Installs MICS from a previously downloaded, platform dependent ZIP archive.

c) Install from MICS CD

Installs MICS from an official MICS CD delivered with the magnet system.

5 Frequently Asked Questions

General:

1. How can MICS be started?

MICS can either be started from within TopSpin or as a standalone application from the Start menu shortcut.

- To start MICS from TopSpin, invoke the command `mics` in the TopSpin command prompt.

2. Is there any guaranty that MICS issues warnings and alerts if the TopSpin computer is running?

No. MICS is a Java application designed for informational purposes and not a security tool. It does not run as a system device and therefore needs to be started by the user either manually or by means of a startup script.

Helium and Nitrogen Levels:

3. My system is not equipped with a nitrogen level sensor. How is the nitrogen level in MICS being calculated?

MICS calculates the current nitrogen level based on the last refill date and the specified loss. The last refill date needs to be specified by the user in the *Nitrogen* tab. MICS always assumes a full nitrogen vessel after a refill.

4. Why does the He/N2 level in MICS not correspond to the level displayed on the BSMS keyboard?

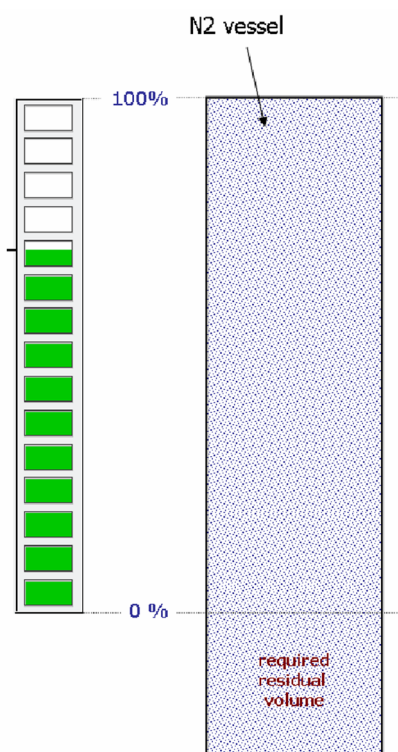
MICS does no real time monitoring of the magnet system and does not trigger any He/N2 measurement by itself. The level data in MICS is updated once an hour. However the actual measurement might be older than that, depending on the measurement interval of the hardware and the TopSpin helium transfer background process.

To get an accurate He/N2 level reading it is recommended to initiate a measurement manually (BSMS keyboard or service web).

Frequently Asked Questions

5. How does the level on the MICS N2 gauge correspond with the vessel volume?

As of MICS version 1.74, the required residual volume, which is essential for a secure operation of the magnet system, will no longer be part of the volume covered by the level gauge.



BSNL (BRUKER Smart Nitrogen Liquefier):

6. Why am I required to perform a “manual check” in MICS every couple of days?

This is a cross-check between MICS and the BSNL Laptop to verify that the various components of the BSNL system are up and running.

Installation Issues:

7. Why do I have to specify the location of my TopSpin installation?

For older BSMS systems without ELCB hardware, MICS has to rely on the *helium-log* file which is written by the TopSpin background process and stored in the TopSpin installation directory.



To make sure MICS is provided with meaningful level data, it is essential to check and adjust the path to the TopSpin heliumlog file after each TopSpin installation. This can be done in the MICS Administration Tab.

If your system is equipped with an ELCB board, MICS can be configured to read the level data directly from the BSMS. This is the recommended setting for newer systems.

A Appendix

A.1 Abbreviations

Abbreviation	Description
BIS	Bruker Identification System
BNL	Bruker Nitrogen Liquefier
BSMS	Bruker Smart Magnet Control System
BSNL	Bruker Smart Nitrogen Liquefier
BSVT	Bruker Smart Variable Temperature System
CCA	Cryo Compressor Adaptor
CMU	Cryo Monitoring Unit
CRCO	Cryo Controller
ELCB	Enhanced Lock Control Board
JAC	Java Controller
MAL	Minimum Allowed Level
MALE	Minimum Allowed Level Energizing
MICS	Magnet Information and Control System
RS	Radiation Shield
SLCB	Sample and Level Control Board

Table A.1: Abbreviations

Revision History List

Index:	Date:	Alteration Type:
01	Oct 21, 2011	MICS service manual, first release
02	April 02, 2012	Manual layout according to Bruker Corporate Design Guidelines. Added "Nitrogen (BNL)" tab.
03	May 25, 2012	Added "Radiation Shield Temperature Monitoring with CMU" chapter, updated section MICS Update Manager, included new cover page layout..

 **Bruker Corporation**

info@bruker.com
www.bruker.com

Order No: Z33046
